

॥ राष्ट्रदेवो भवः ॥



Falcon[®]
A MACHINE FOR MANKIND

Since 1994

V6 Borewell Pumps

Agriculture V6 Slim SRS, NRS, FMC, Fully SS & URC
Borewell Submersible Pumpsets



FULLY
CED COATED
PUMPSET

Inventor of
60 Feet

(18 Mtr.)
Duty Point Head Per Stage
in V6 Borewell

First Time In India
(S.S. Technology)

V-6 Slim
SRS

V-6
STD-DLX
NRS

V-6
FMC

V-6 PRM.
Fully SS
HRS

V-6 PRM.
HRS

V-6 3P
URC

V-6 3P
HRC

V-6 FSP
PRM

First Time in India, BEE 5 Star Ratings Pumps in 50+ Models
in V6 Borewell Series (As per Latest BEE Guideline 2020)



Commercial Complex



Industries



High Rise Apartments



Gardens



Bungalows



Society Township



Educational Insti.



Export



Government Sector
& NGO



Hotel & Hospital



Farm

Chale Pragati Ki Aur[®]

DOMESTIC & AGRICULTURE BOREWELL PUMPS

HP Range : 3.0 HP to 40.0 HP
Head Range : 12 Mtr. to 685 Mtr.
Discharge Range : 1008 LPM to 55 LPM

V6 SLIM / V6 BOWLSET PERFORMANCE DATA

Range	Bowl Range	Installation Head Range in Mtr, (Uniform output)	Discharge in Head LPM to LPM	Material Bowl & Impeller
V6 Slim	SRS Series	6 - 12	540 - 40	SS-304 Grade Bowl with SS-304 Impeller
V6 Prm / V6 OF	HRS Series	12 - 18	660 - 75	SS-304 Grade Bowl with SS-304 Impeller
V6 Prm / V6 OF	HRS CSP Series	10 - 15	550 - 110	SS-304 Grade Bowl with Rubber Moulded Bowl Plate with SS-304 Impeller
V6 3PC / V6 Std Dlx	HRC Series	8 - 16	720 - 70	CED Coated CI Bowl with SS-410 Impeller
V6 3PC / V6 Std Dlx	URC Series	6 - 10	390 - 45	CED Coated CI Bowl with SS-410 Impeller
V6 Prm / V6 Std Dlx	NRS Series	12 - 18	635 - 65	SS-410 Grade Bowl and Noryl Diffuser with Nylon-66 Impeller
V6 Prm	FMC Series	5 - 10	1250 - 190	CED Coated CI Bowl with SS-410 Impeller

SPECIFICATION

- ✓ Available in **Single Phase** : 3.0 HP to 10.0 HP, **Voltage Range** : 180V to 240V 50Hz., 2880 RPM.
- ✓ Available in **Three Phase** : 3.0 HP to 40 HP, **Voltage Range** : 350V to 415V 50Hz., 2880 RPM.
- ✓ Available in **Two Phase** : 2.0 HP to 5.0 HP **Voltage Range** : 200V to 400V 50Hz., 2880 RPM (In V-6 Premium Motor)
- ✓ Specially designed for **High Head Series** V-6 Premium Motor with V-6 HRS Pump up to 40 HP Range.
- ✓ Specially designed for **Heavy Sandy Area** (HRS CSP Series) V-6 Premium Motor with V-6 HRS CSP Pump up to 40 HP Range.
- ✓ Available in **Fully SS Pump Set HRS Series** : 3.0 HP to 40 HP
- ✓ Available in **V-6 STD - DLX Motor Series** : 3.0 HP to 15 HP with Aluminum Rotor
- ✓ Available in **V-6 3PC - Motor Series** : 3.0 HP to 30 HP with Copper Rotor
- ✓ Available in **V-6 PREMIUM Motor Series** : 3.0 HP to 40 HP with Copper Rotor
- ✓ **Outlet Size in Inch** : 2.0", 2.5" & 3.0"



V6 HRS

V6 HRC



V6 NRS

V6 URC



V6-FMC

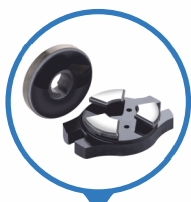
V6-Slim SRS



V6-HRS CPS with Rubber Plate



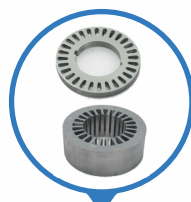
SS Sand Guard Assembly



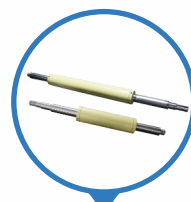
Tilting Hightech Carbon Thrust Bearing Set



CED Coated CI Parts



CRNGO Stamping



Copper Rotor with CED Coating



Mfg. by :

Falcon Pumps Pvt. Ltd.

Vavdi Industrial Area, Gondal Road, NH-27, Post : Vavdi, Rajkot - 360 004, Gujarat, (INDIA). Mo. : +91 97277 00568/9

www.falconpumps.in | info@falconpumps.in | 1800 123 0000

GIVE A MISSED CALL ON **90999 53653** AND CONNECT WITH OUR MILLION FRIENDS



Falcon Website QR Code

FPPL/CATALOG-ENG/2023-24