

॥ राष्ट्रदेवो भवः ॥



**Falcon**<sup>®</sup>  
A MACHINE FOR MANKIND

Since 1994

# V-7/V-8/V-10 Borewell Pumps

Agriculture V7 FMQ / V8 HFQ/FMC/URC/HRS Series  
Borewell Submersible Pumpsets



V8/V10 HRS   V8/V10 FMC/HFQ   V8 URC   V8/V10 JANTA   V7/V8 JANTA HRS



Commercial Complex



Industries



High Rise Appartments



Gardens



Bunglows



Society Township



Educational Insti.



Export



Government Sector  
& NGO



Hotel & Hospital



Farm

Chale Pragati Ki Aur<sup>®</sup>

# AGRICULTURE BOREWELL PUMPS

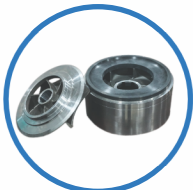
**Power Range** : 5.0 HP to 150 HP  
**Head Range** : 12 Mtr. to 540 Mtr.  
**Discharge Range** : 3600 LPM to 270 LPM

## V7 / V8 / V10 BOWLSET PERFORMANCE DATA

Range	Bowl Range	Installation Head Range in Mtr, (Uniform Output)	Discharge in Head LPM to LPM	Material Bowl & Impeller
V7 - V6	FMQ Janta Series	6 - 13	1860 - 660	CED Coated Cast Iron Bowl With SS-410 Impeller
V8	HFQ/FMC Deluxe Series	6 - 17	2700 - 410	CED Coated Cast Iron Bowl With SS-410 Impeller
V8 - V6	HFQ/FMC Janta Series	6 - 17	2620 - 410	CED Coated Cast Iron Bowl With SS-410 Impeller
V8	URC Deluxe Series	13 - 20	1020 - 180	CED Coated Cast Iron Bowl With SS-410 Impeller
V8	HRS Deluxe Series	12 - 30	1770 - 270	SS-410 Grade Bowl with Rubber Neck Ring CI Bowl Plate with SS-410 Impeller
V10	FMC Deluxe Series	12 - 25	3600 - 1210	CED Coated Cast Iron Bowl With SS-410 Impeller
V10	HRS Deluxe Series	24 - 42	1925 - 760	SS-304 Grade Bowl with Rubber Neck Ring CI Bowl Plate with SS-410 Impeller

### SPECIFICATION

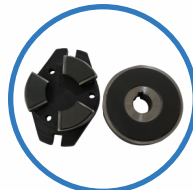
- ✓ Available in Three Phase: 5.0HP to 25HP Voltage Range: 350V to 415V 50Hz., 2880 RPM (V7 FMQ Pump Janta with V-6 3 PC Motor)
- ✓ Available in Three Phase: 10HP to 100 HP Voltage Range: 350V to 415V 50Hz., 2880 RPM (V8 FMC and HRS Pump with V-8 Deluxe Motor)
- ✓ Available in Three Phase: 5.0HP to 30HP Voltage Range: 350V to 415V 50Hz., 2880 RPM (V8 FMC Pump Janta with V-6 3 PC Motor)
- ✓ Available in Three Phase: 15HP to 60HP Voltage Range: 350V to 415V 50Hz., 2880 RPM (V8 URC Pump with V-8 Deluxe Motor)
- ✓ Available in Three Phase: 75HP to 100HP Voltage Range: 350V to 415V 50Hz., 2880 RPM (V8 FMC Pump Janta with V-10 Deluxe Motor)
- ✓ Available in Three Phase: 15HP to 100HP Voltage Range: 350V to 415V 50Hz., 2880 RPM (V10 FMC & V10 HRS Pump Janta with V-8 Deluxe Motor)
- ✓ Available in Three Phase: 75 HP to 150 HP Voltage Range: 350V to 415V 50Hz., 2880 RPM (V10 FMC & V10 HRS Pump Janta with V-10 Deluxe Motor)
- ✓ Outlet Size in Inch: 3.0" , 4.0", & 5.0"



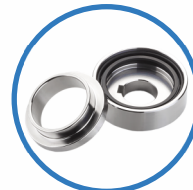
**Redial SS Bowlset  
With Rubber Plate**



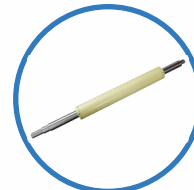
**CED Coated  
Mix Flow Bowl Set**



**Tilting High Tech Carbon  
Thrust Bearing Set**



**Sand Guard  
Assembly**



**Copper Rotor  
With CED Coating**



Mfg. by :

**Falcon Pumps Pvt. Ltd.**

Vavdi Industrial Area, Gondal Road, NH-27, Post : Vavdi,  
Rajkot - 360 004, Gujarat, (INDIA). Mo. : +91 97277 00568/9

www.falconpumps.in | info@falconpumps.in | 1800 123 0000

GIVE A MISSED CALL ON **90999 53653** AND CONNECT WITH OUR MILLION FRIENDS



Falcon Website  
QR Code